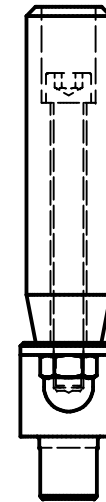
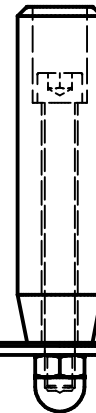
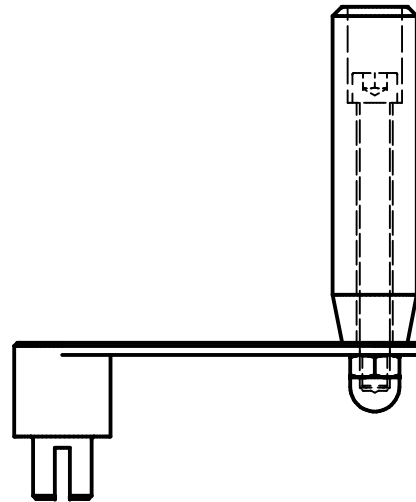
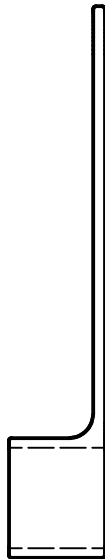
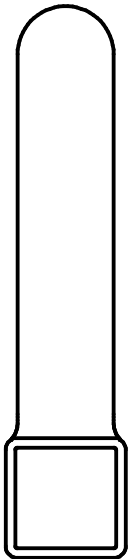
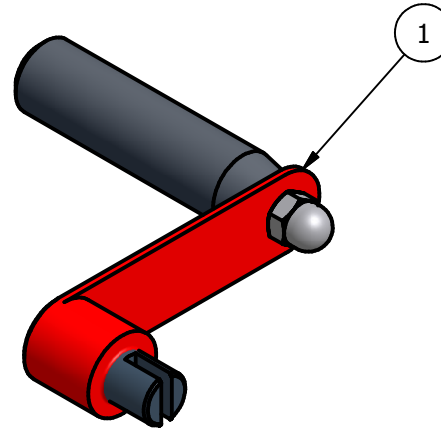
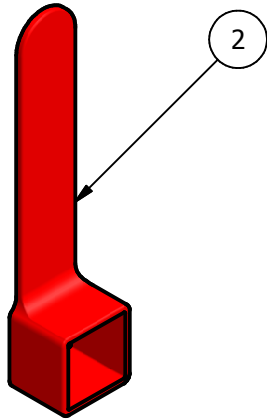


Parts List			
ITEM	QTY	PART NUMBER	DESCRIPTION
1	1	P201-12A	CRANK HANDLE
2	1	P201-43	WINCH HANDLE



UNLESS OTHERWISE SPECIFIED:
 3 PLACE DECIMALS +/- .002 TOL.
 2 PLACE DECIMALS +/- .010 TOL.
 FRACTIONAL DIMS. +/- 1/32 TOL.
 ANGULAR DIMS +/- 0 DEG 15' TOL.

COPYRIGHT
 SPIETH-ANDERSON INT'L INC.
 CONFIDENTIAL: RELEASED AND
 ACCEPTED BY THE POSSESSOR ON
 CONDITION THAT NO RIGHTS OF
 REPRODUCTION OR USE ARE GIVEN
 EXCEPT FOR PURPOSES ELSEWHERE
 SPECIFIED IN WRITING BY
 SPIETH-ANDERSON INT'L INC.
 ORILLIA, ONTARIO
 CANADA

Spieth-Anderson International Inc.
 Forestview Rd., P.O. Box 40
 Orillia, Ontario Canada L3V 6H9

PART: **VB WINCH AND CRANK HANDLE**

DWN: LAW | DATE: 07/11/05 | CHK'D | SCALE: NTS

REVISIONS | DWG No: